



AFA Dues Policy

Or how to keep up with inflation.

Research by Mark Dierlam



What are Dues?

- What does membership cost?
- What does dues cover?
- What does Field Operations cost?
- What is a “membership cost” and “all others”
- Beyond the scope of this issue, but still a core question for the Association.



Issue

- Currently no specific procedures specified
- No specified officer responsible for issue
- No written policy on when to review dues
- **Need to codify and simplify this issue!**

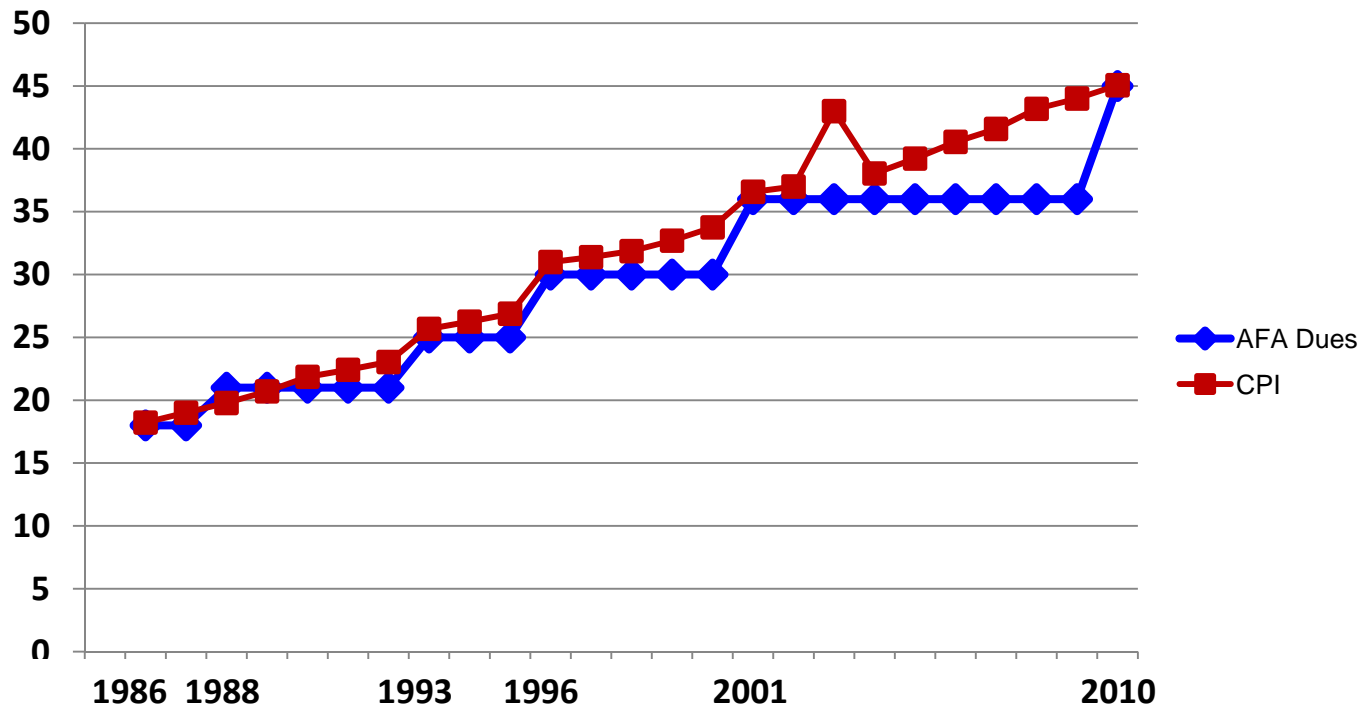


Truisms

- Dues increases have not impacted membership recruiting and retention.
- In 25 years: 5 single year dues increases
- Averaged 20% each time
- 1986 dues were \$18
- Today dues are \$45
- This increase matches the “CPI”
- There is an admin cost associated with change



Dues History



Educate

Advocate

Support



Action

- Review dues every 3 years
- Increase by “CPI” based on
 - Finance Committee review/ recommendation
 - EXCOM and BoD approval
- Increases required beyond CPI threshold
 - Delegates approve at convention
- Would start January 1 after convention
- Rebate and support payments mirror increases



Payment Formulae

- **Membership rebate** increase with the same percentage of membership dues. Current one year membership is \$45.00 ($\times .3333$) = \$15 rebate, three year membership is \$110 ($\times .2272$) = \$25 rebate, and lifetime membership is \$600 ($\times .075$) = \$45 rebate. So if membership dues increase the same percentage (.3333, .2272, and .075) would be used for the new rebate.
- **Support payments:** Retain formula for (all other criteria remains the same), when dues change with the automatic CPI adjustment the support payment **will remain the same percentage of dues**. Current support payment is \$2.28 per year (\$.57 per quarter) for each member. For example if the one year dues would raise from \$45 to \$50 the support payment (.0506%) would become \$2.53 per year (\$.63 per quarter). State support payment (.0173%) is \$.78 per year (\$.195 per quarter) for each member affiliated with a chapter in the state. Following the example from \$45 to \$50 the state support payment would change to \$.87 per year (\$.218 per quarter).



Implementation

- Change Constitution
 - Appears to require a formal recommendation
- Change OPM
 - Board of Directors, para A, sub para 6 & 7
 - Executive Committee, para B, sub para 3
 - Finance Committee, para H, sub para 2



Discussion?